

Products Group



24" High Definition Panoramic Display

Model: REP-24HDW-10U110TV

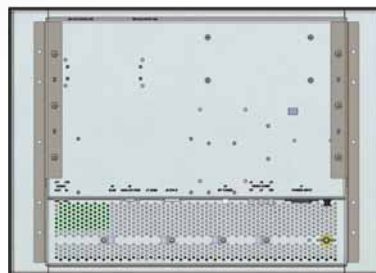
KEY FEATURES

- 24.0" Color Active Matrix Liquid Crystal Display
- High Resolution 1920 x 1200 (WUXGA)
- Tested/Passed EMI Testing IAW MIL-STD-461F, Vibration Testing, MIL-STD-167-1 and Shock Testing IAW, MIL-S-901D
- Remote Control
- VGA, DVI-D, HDMI, RF Tuner (NTSC), Composite, Audio
- Bonded Anti-Reflective Protective Window
- Wide Viewing Angle ± 89 Degrees
- 10U Rack Mount

The REP-24HDW-10U110TV is Epsilon's 24" display offering significant benefits with respect to dimensions, ruggedization and video quality. The 24HDW combines unmatched mechanical integrity with exceptionally low weight to provide a unique, rugged display solution, especially for applications where space and weight are critical.

The REP-24HDW-10U110TV features a first-class 24" Active Matrix Liquid Crystal Display 1920 x 1200 (WUXGA) offering excellent performance in terms of brightness, crispness, contrast and viewing angle. The bezel and mounting can be customized to address virtually any mounting need in any application. Additionally, the REP-24HDW-10U110TV combines this high level of performance and versatility with a very competitive price/performance value.

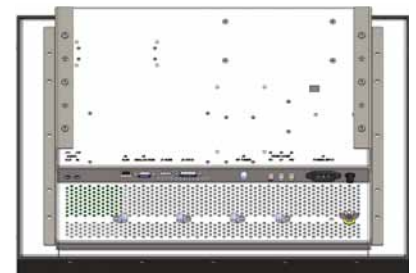
Epsilon's displays have been designed and qualified for application in the most hostile environments. Epsilon's rugged displays are well suited for specific naval combat, army and airborne applications.



BACK



SIDE



BACK ISOMETRIC

