



CAPABILITIES OVERVIEW

Core Capabilities



Analysis



Instructor-Led Training



Knowledge Management



e-Learning Development



Simulation and Virtual Reality



Electronic Classroom



Custom Training Equipment



A Creative Path to Your Learning Objectives

Our team of professionals creates end-to-end custom learning solutions for corporations, associations and government agencies.

We combine state-of-the-art technical expertise with creative solutions to deliver results-driven training. We are a cohesive, experienced team of project managers, instructional designers, technical writers, graphic designers, 3D graphic artists, videographers, web developers, database developers, AR/VR developers, and QA professionals.

Our production process allows for expedited development, no matter what the solution. And we are experts in complying with industry e-learning specifications, including SCORM, Section 508 of the Americans with Disabilities Act, and other federal accessibility requirements

Selected Clients

- Applications International Corporation
- Volkswagen of America
- Department of Labor
- Internal Revenue Service
- United Rentals
- University of California, San Diego
- U.S. Navy

Analysis

A detailed analysis is the first step to creating effective instruction. Our analysis process defines project requirements, identifies potential problems, recommends the ideal instruction formats to meet the project requirements, and identifies acceptable alternatives.

- Front End Analysis (FEA)
- Navy Training Systems Plan (NTSP)
- Job Duty Task Analysis (JTDA)
- Business case analysis
- Training project plans

Instructor-Led Training

Whether stand-alone or part of a blended solution, when ILT is a customer requirement, Epsilon XR delivers:

- Curriculum and courseware development
- Pilot and Train-the-Trainer
- Instructor/Trainee Guides
- Lab sheets
- Testing plans

Knowledge Management

We offer solutions for knowledge management tools and systems designed to help learners efficiently share knowledge and collaborate in a secure environment.

- Learning channels
- Learning Management Systems (LMS)
- Learning Management Portals (LMP)

e-Learning Development

We transform complex information into interactive coursework that engages learners. Whether online training, blended solutions or ILT presentations, our design team can develop a custom curriculum for maximum performance or convert existing material into the latest, most efficient learning platform.

- e-Learning development
- Flash-to-HTML5 conversion
- Courseware conversion
- Print media development

Lesson Plan
Income from Form 1040 Lines 7-11
Time Required: 2-3 hours

Introduction	Objectives	Topics
This is the first of several lessons covering the income section of the taxpayer's return. This lesson focuses on the income that is reportable on Form 1040, lines 7-11. A critical component of completing the taxpayer's return is distinguishing between taxable and nontaxable income.	Compute taxable and nontaxable income. Distinguish between earned and unearned income. Report income correctly on Form 1040, lines 7-11.	Determining taxable and nontaxable income Reporting wages, salaries, tips, etc. Scholarship and Fellowship Income Interest income Dividends State and local refunds Alimony

Key Terms
Allocated Tips: Tips an employer assigns to an employee. They are in addition to the tips the employee reported to the employer.
Capital Gain Distributions: Also called capital gain dividends. They come from mutual funds and real estate investment trusts (REITs).
Earned Income: Any income received for work, such as wages or business income.

Websource
Arteon
Model Details
Specifications 2018
Date Guide 2019 | 2018
Trim Comparison 2019 | 2018
Change Points

UC San Diego
Effective Succession Planning at UC San Diego
Course Menu | Strategic Succession Planning | COURSE MENU | TOPIC MENU | GLOSSARY | REFERENCES | EXIT

Process and Policies
Incorporating Equal Access and Diversity Awareness
So, how do you incorporate both equal access and diversity awareness as part of your succession planning strategy?
Click the timeline numbers to find out.

1 2 3 4
EQUAL ACCESS

1 2 3 4
DIVERSITY AWARENESS

Contact

Rich Benedetto

Director, EpsilonXR

Direct: 540-222-5026

rbenedetto@epsilonsystems.com

Simulation and Virtual Reality

Immersive learning technologies are cutting-edge methods for delivering simulated training environments or skills. Epsilon XR is already developing virtual training systems for military applications and more.

- Simulation/Stimulation
- Virtual Task Trainers (VTT)
- Virtual Training Aids (VTA)
- Virtual Reality (VR)
- Augmented Reality (AR)
- Multiple player VR

Electronic Classroom

Virtualizing the Classroom – Transform static desktops into secure, digital workspaces that can be delivered on demand. Provision virtual or remote desktops and applications through a single VDI and app virtualization platform to streamline management and easily entitle end users.

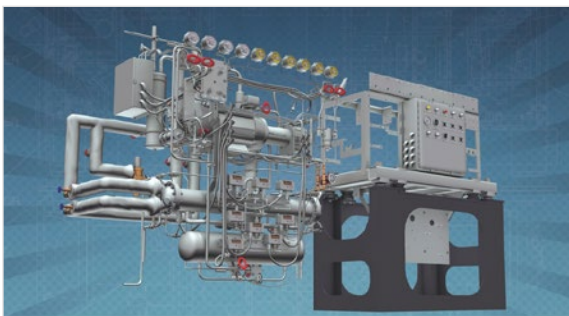
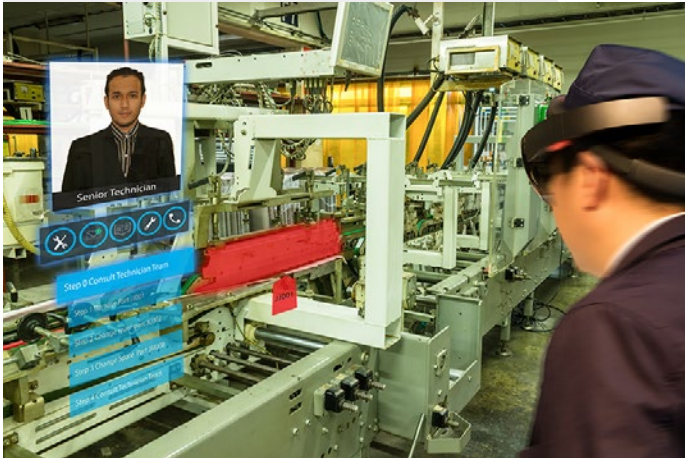
- Design architecture
- Technology selection
- Systems integration

Custom Training Equipment

Design and manufacturing of Partial Task Trainers (PTT) and Technical Training Equipment (TTE) that augment virtual training. This kind of custom equipment enhances the learning experience by giving students the opportunity for hands-on experience in a classroom or other training environment.

- Partial Task Trainers (PTT) for classroom
- Physical training aids
- Full trainers with alternative materials
- Technical Training Equipment (TTE)

Call on Epsilon XR and get your workforce engaged in learning!



1.5 TON ROTARY REFRIGERATION PLANT

